

# OPERATING INSTRUCTIONS AND SAFETY NOTES

**mobiBLUE**

12 V~DC • 24 V~DC • 230 V~AC



## **Pressol Schmiergeräte GmbH**

This documentation is exclusively intended for the operating company and their staff.

Without our written consent, the content of this documentation (textes, figures, drawings, charts, diagrams etc. ), must not be duplicated or distributed, neither in full or in part, utilized for the purpose of competition or passed on/made available to third parties.

### **Pressol Schmiergeräte GmbH**

Parkstraße 7  
93167 Falkenstein | Germany  
Tel. +49 9462 17-0  
Fax +49 9462 17-208  
info@pressol.com  
www.pressol.com

### **Operating instructions translation**

Date of issue: 10 / 2020

We reserve the right to make design and product modifications, which serve to improve the product.

## **Table of Contents**

1.	Introduction	3
1.1.	Preface	3
1.2.	Obligations of the personnel	3
1.3.	Symbols in this manual	3
1.3.1.	Structure of the safety notes	3
1.3.2.	Hazard symbols	4
1.3.3.	General symbols	4
2.	Safety notes	4
2.1.	Authorized personnel	4
2.2.	Intended conditions of use	5
2.3.	Notes for maintenance, cleaning and repair	5
3.	Area of application	5
4.	Transport and storage	6
5.	Technical data	6
5.1.	Equipment	7
6.	Operation	8
7.	Equipment of the transport vehicles	9
8.	Maintenance	9
9.	Installed components	9
10.	Exploded view mobiBLUE 450 I	10
11.	Exploded view mobiBLUE 250 I	12
12.	Repair/Service	14
13.	Disposal	14
14.	Damage and repair report	14

## 1. Introduction

### 1.1. Preface

**Please carefully read these operating instructions and observe in particular all safety notes!**

Our staff will be pleased to provide support if you have any questions about the product.

**Yours sincerely, Pressol Schmiergeräte GmbH**

### 1.2. Obligations of the personnel

Before commencing work, all persons who are entrusted to work with the mobiBLUE are obliged:

- to follow all applicable regulations on occupational safety and accident prevention.
- to read and to comply with all safety instructions and warning notes contained in these operating instructions.

Please observe the following instructions in the interest of all concerned:

- Refrain from any unsafe working methods!
- Adhere to all hazard and warning notes contained in this manual!
- In addition to this documentation, keep to all generally accepted safety rules, legal provisions as well as all other binding rules regarding occupational safety, accident prevention and environmental protection!
- Wear appropriate protective clothing in accordance with the work to be done!
- Perform only work for which you have been sufficiently trained and instructed!
- Only genuine spare parts as well as original tools and auxiliaries of the manufacturer are allowed to be used in order to ensure the functional safety and maintain the warranty coverage.

### 1.3. Symbols in this manual

#### 1.3.1. Structure of the safety notes

The safety notes have the following structure:



#### **SIGNAL WORD**

##### **Type and source of the hazard**

- Consequences of non-compliance with the notes
- Measures to avoid that risk

Depending on the danger level, different signal words are used:




Signal word	Danger level	Consequences of non-compliance
<b>DANGER</b>	Imminent threat of danger	Death or serious bodily injury
<b>WARNING</b>	Possible threat of danger	Death or serious bodily injury
<b>ATTENTION</b>	Possibly dangerous situation	Damage to material property






#### **NOTE**

Indicates further information or tips which facilitate work

## 1.3.2. Hazard symbols

Symbol	Meaning
	General hazard symbol. The warning note marked in this way contains supplementary information on the type of hazard.
	This symbol warns of dangerous electrical voltages
	This symbol warns of a hazardous explosive atmosphere

## 1.3.3. General symbols

Symbol	Meaning
	A small black square indicates the work you have to perform.
	The arrow denotes lists
	The arrow identifies cross-references.  If cross-references to other chapters are required within the text, the expression is shortened for reasons of clarity.  Example: ⇨ Chapter 2 Safety notes This means: please refer to chapter 2 for the safety notes.

## 2. Safety notes

Various dangers may occur if the mobiBLUE is improperly handled during installation, commissioning and daily operation.

**WARNING****Risk of injury and damage to material property because of improper handling!**

- Hold the manual at the disposal of the operating staff at the usage site of the unit.
- Country-specific safety measures and accident prevention regulations must be observed.

## 2.1. Authorized personnel

Only qualified and authorized persons are allowed to operate and to work on the mobiBLUE.

Persons are qualified if they are, due to their training, experience, instruction and knowledge of the relevant standards, able to assess assigned tasks and to identify potentially hazardous situations.

All persons charged with installation, operation, maintenance and repair work, must have read and understood these operating instructions.

## 2.2. Intended conditions of use

The mobiBLUE is a mobile tank with a nominal volume of 250 l or 450 l. It has been exclusively designed for AdBlue® delivery and refuelling.

The mobiBLUE tank is equipped with an electric diaphragm pump and is available in two sizes, namely with an inner volume of 250 l and with an inner volume of 450 l. For each model, a 230 V AC, a 12 V DC or a 24 V DC motor is offered.



### NOTE

No other fluid types than AdBlue® are allowed to be stored in this product

Any application beyond the intended use can lead to hazardous situations and shall be regarded as non-intended use.

The user is liable for any damage resulting from non-intended use.

## 2.3. Notes for maintenance, cleaning and repair



### WARNING

**Risk of injury and damage to material property because of improper maintenance and repair**

- Should unusual noises occur, immediately stop the electric diaphragm pump. Immediately identify and eliminate the cause in order to avoid consequential damages.
- Observe the safety sheet for AdBlue®.

## 3. Area of application

The mobiBlue is a mobile tank and is suited for the storage and transport of and the refuelling with AdBlue®.

The mobiBlue can also be used as a stationary tank for storing and dispensing AdBlue®. In this case, the user is responsible for the adherence to the appropriate national directives regarding the installation and the application of this product.

The local fire and environmental protection measures must be observed.



### DANGER

**Risk of injury and material damage from explosive vapors**

- **Never use the pump to deliver explosive fluids such as petrol or other fluids with similar flashpoints!**
- **Use in an explosive environment is prohibited.**

Use in the food industry is prohibited.



### ATTENTION

**Escape of the fluid to be pumped**

- After initial start-up, check the pump and the connections for tightness.

## 4. Transport and storage

The loading area must be smooth and without sharp edges.



### ATTENTION

- The device may be transported only with the power supply shut off and with closed valves and necks, rolled up hoses and lines and locked cover.
- The filled tank is only allowed to be loaded and unloaded by means of a stacker or a crane, whereby the load carriers must be correctly fixed.

- During transport, the tank must be fixed and secured.
- During storage and transportation, the tank must not be damaged.
- It is forbidden to push or to roll the tank.
- During loading and unloading, the engine must be turned off, unless a running engine is required for the operation of the pumps or of other loading and unloading devices or unless a running motor is allowed by the national rules of the country in which the vehicle is located.
- Before leaving the transport vehicle, the driver must secure it by applying the parking brake.

## 5. Technical data

<b>Tank volume (l)</b>	<b>450</b>	<b>450</b>	<b>450</b>
<b>Motor variant pump</b>	<b>230 V AC</b>	<b>12 V DC</b>	<b>24 V DC</b>
Material tank		LLDPE	
Material cover		LLDPE	
Wall thickness (mm)	7	7	7
Color tank		white	
Colour cover		blue, RAL 5015	
Dimensions LxWxH (mm)		1200 x 800 x 912	
Attachment points		universal mounting lugs for shackle on site	
Weight empty (kg)	56	56	56
<b>Pump</b>			
Manufacturer		FMT Swiss AG	
Pump design		diaphragm pump, selfpriming	
Delivery rate under free discharge (l/min)	35	30	30
Discharge pressure (bar)	1,6	1,6	1,6
Pumping media		AdBlue®, urea	
Temperatur of the pumping media (°C)		- 10 / + 35	
Connecting cable, length (m)	1,8	1,6	1,6
<b>Motor data</b>			
Voltage (V)	230 AC	12 DC	24 DC
Frequency (Hz)	50/60		
Power consumption (A)	1,5	14	6,5
Duty cycle (min)	continuous operation	180	180
Safety class	IP 66	IP 66	IP 66

Tab. 5.-1: Technical data

<b>Tank volume (l)</b>	<b>250</b>	<b>250</b>	<b>250</b>
<b>Motor variant pump</b>	<b>230 V AC</b>	<b>12 V DC</b>	<b>24 V DC</b>
Material tank		LLDPE	
Material cover		LLDPE	
Wall thickness (mm)	7	7	7
Color tank		white	
Colour cover		blue, RAL 5015	
Dimensions LxWxH (mm)		1200 x 800 x 625	
Attachment points		universal mounting lugs for shackle on site	
Weight empty (kg)	43	43	43
<b>Pump</b>			
Manufacturer		FMT Swiss AG	
Pump design		diaphragm pump, selfpriming	
Delivery rate under free discharge (l/min)	35	30	30
Discharge pressure up to (bar)	1,6	1,6	1,6
Pumping media		AdBlue®, urea	
Temperature of the pumping media (°C)		- 10 / + 35	
Connecting cable, length (m)	1,8	1,6	1,6
<b>Motor data</b>			
Voltage (V)	230 AC	12 DC	24 DC
Frequency (Hz)	50/60		
Power consumption (A)	1,5	14	6,5
Duty cycle (min)	continuous operation	180	180
Safety class	IP 66	IP 66	IP 66

Tab. 5.-2: Technical data

## 5.1. Equipment

The mobiBLUE is equipped with following components:

- Single-walled tank
- Universal mounting lugs for shackle on site (89 823)
- Lockable protective cover (81 579)
- Tank cap with seal (45 152)
- Ventilation valve (45 150)
- Diaphragm pump, self-priming for AdBlue®
- On/off switch
- Mechanical nozzle for AdBlue® (23 163 878)
- In-line meter, digital, for AdBlue® (only variant with meter)
- Discharge hose, 4 m, DN 19
- AdBlue® suction hose with siphon protection
- Gas spring kit (45 153, only mobiBLUE 450 l)

## 6. Operation

All mobiBLUE tanks are completely checked for proper function and tightness prior to shipment.

After delivery, the tank must be checked for complete equipment and possible transport damages. After the installation of the pump set, if not yet in place, and the filling with AdBlue®, the tank is ready for operation.



### NOTE

- If the tank or a component of its equipment is damaged, the device must be put out of operation until the fault has been rectified.
- If a leakage of the tank has been detected, the fluid must be pumped into another container.
- The supplier of the device must be informed.

**Because of the type of the stored liquid and the environmental risks resulting thereof, the following instructions must be observed:**

- The tank is only allowed to be filled through the filler neck. It is forbidden to overfill the tank!
- It is not allowed to store contaminated AdBlue® in the tank in order to prevent soiling of and damage to the pump system!
- Before the pump is put into operation, the operating instructions must be read and observed.
- Filling and refuelling may only be performed under the supervision of an authorized person.
- During transport and storage, the tank must not be damaged. Always keep the tank equipment in a usable condition.
- In case of an insufficient delivery rate, it may be necessary to clean the filter at the suction hose.
- The device must be protected against interference of unauthorized persons.
- Park the vehicle as close as possible to the tank in order to avoid unnecessary stress to the hose.
- Take the nozzle out of the holder and insert it into the vehicle's filler neck. Press the trigger only when the pump is running.
- Operate the button to switch on the pump's power supply.
- Press the trigger for filling.
- The nozzle automatically stops when the vehicle's tank is completely filled.
- Operate the button to switch off the pump's power supply.
- Let the nozzle drip off into the vehicle's tank before you fix the nozzle in the holder again.
- Never leave the nozzle switched on when it is not used.
- Close the cover of the mobiBLUE tank in order to prevent the penetration of rain water.
- Any modifications of the device's design, equipment and intended use is forbidden without prior consultation with the manufacturer.



### ATTENTION

#### Damage to the product

- This product is only allowed to be operated with sufficient liquid in the tank. Otherwise, irreparable damage of the refuelling system and its premature failure may occur.



## 7. Equipment of the transport vehicles

Each transport vehicle, which must also meet the requirements imposed by other provisions, must have the following equipment:

- Fastening straps for fixing and securing the mobile tank during transport.
- A portable 2 kg fire extinguisher with a seal and a conformity mark in accordance with the officially recognized standard and validity date (month and year).
- For each vehicle at least one wheel chock corresponding in size to the vehicle's weight and wheel diameter.
- Two self-standing warning signs (e.g. retroreflective safety cones or warning triangles or orange strobe lights with autonomous energy supply).
- Suitable warning vest or warning clothing (e.g. according to EN 471) for each worker on the transport vehicle.
- Hand lamp.



### ATTENTION

#### Risk of escaping fluids

- During transport and storage, the mobiBLUE tanks must not be damaged. Always keep the tank equipment in a usable condition!

## 8. Maintenance

Regular maintenance helps to reduce the risk of product failure and premature component failure.

- In order to prevent the risk of leakages and spills, check to ensure that the suction and refuelling hoses are firmly fastened.
- Check the state of the power supply cables.



### DANGER

#### Fatal electric shock through contact with live parts

- During all service work, the pump's main switch must be set to the 0 position and must be secured in this position.
- All inspection and maintenance work may only be performed by qualified personnel.



### NOTE

- Visually inspect the tank on a regular basis.
- If a leakage of the tank has been detected, the fluid must be pumped into another container.
- The supplier of the device must be informed.

## 9. Installed components

The operating instruction manual for the AdBlue® electric diaphragm pump is added separately. For variants with a meter, you will additionally receive the manual for the meter.

## 10. Exploded view mobiBLUE 450 I

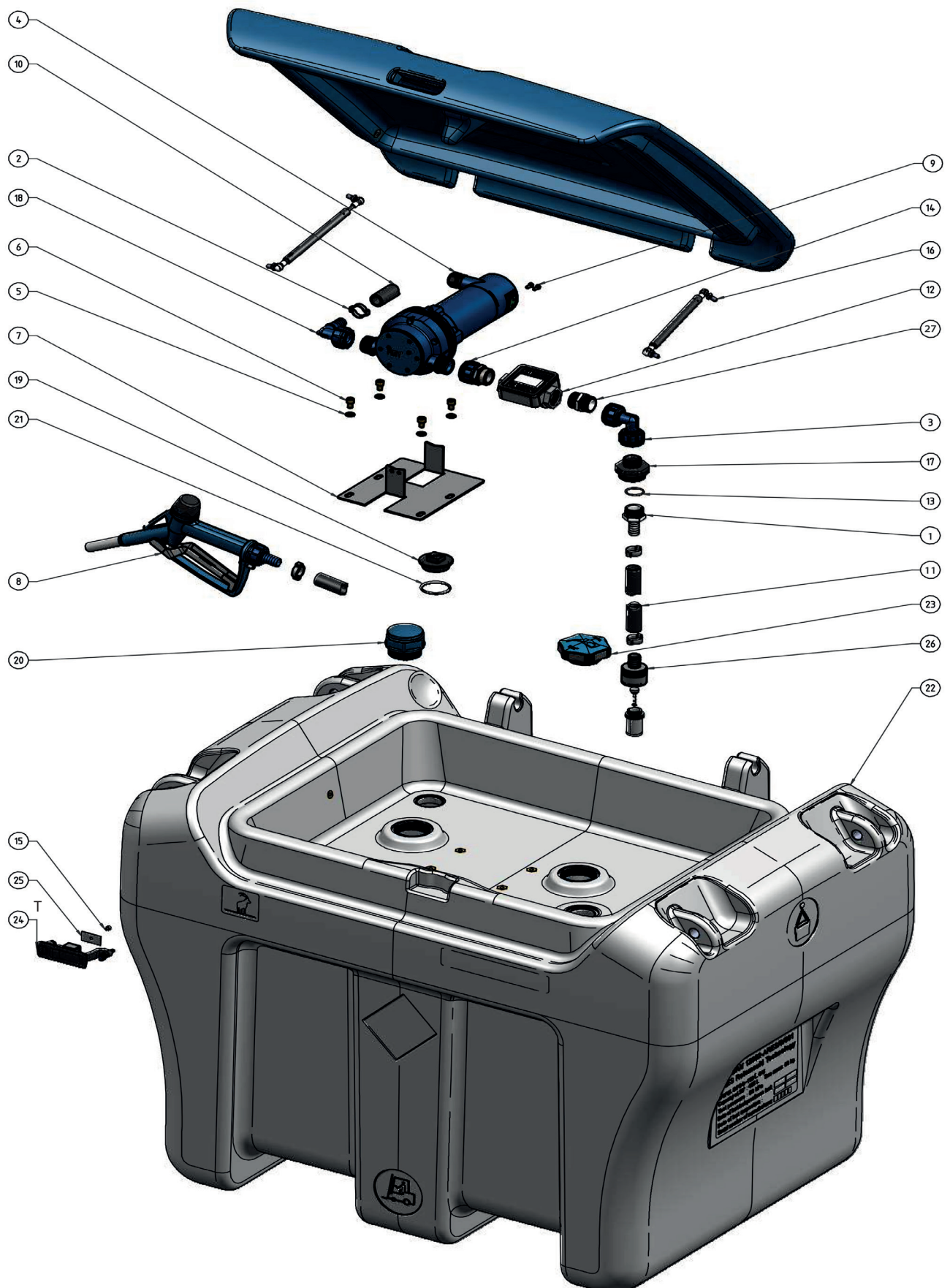


Fig. 10.-1: Exploded view mobiBLUE 450 I

Pos.	Quantity	Designation	Item number
1	1	Threaded fitting G 1" male	80 724
2	4	2 ear hose clamp	88 030 878
3	1	Bend 90°	25 600 091
4	1	AdBlue electric diaphragm pump*	25 282 092
5	4	Washer 8,4x1,6	84 754
6	4	Cylinder screw M8x10	84 753
7	1	Foot for pump	91 148
8	1	Mechanical nozzle AdBlue®	23 163 878
9	2	Cylinder screw M5x12	86 770
10	2	AdBlue® hose	86 167
11	2	Suction hose	81 419
12	1	In-line meter digital	23 295 878
13	2	O-ring FKM 80-29x2,5	89 111 878
14	1	Manifold connection short G 1" female-G 1" male	25 612 091
15	1	Cylinder screw M5x6	89 445
16	1	Gas spring kit	45 153
17	1	Fitting	91 120
18	1	Bend 90° with fitting G 1" female	25 601 091
19	1	Screw plug	83 978
20	1	Ventilation valve G 2"	45 150
21	1	O-ring FKM 70-47x4	83 131 860
22	1	mobiBlue 450 l	45 319 155
23	1	Tank cap	45 152
24	1	Lever lock	89 835
25	1	Bracket	82 608
26	1	Stainless steel foot valve	23 188
27	1	Double nipple G1" male	80 792

\*depending on the model

Tab. 10.-1: Overview of components for fig. 10.-1

## 11. Exploded view mobiBLUE 250 I

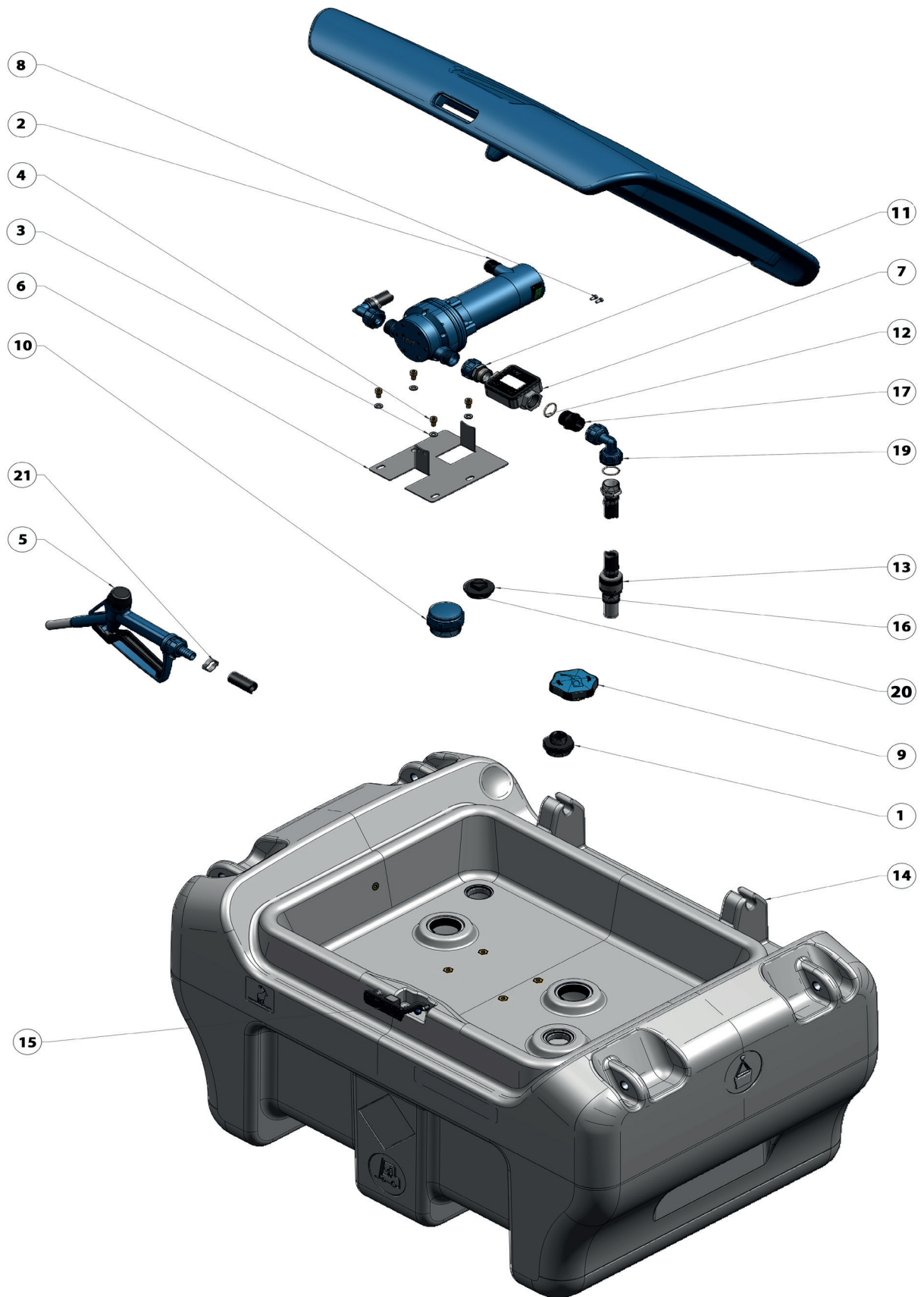


Fig. 11.-1: Exploded view mobiBLUE 250 I

Pos.	Quantity	Designation	Item number
1	1	Fitting	91 120
2	1	AdBlue electric diaphragm pump*	25 281 092
3	4	Washer 8,4x1,6	84 754
4	4	Cylinder screw M8x10	84 753
5	1	Mechanical nozzle AdBlue®	23 163 878
6	1	Foot for pump	91 148
7	1	In-line meter digital	23 295 878
8	2	Cylinder screw M5x12	86 770
9	1	Tank cap	45 152
10	1	Ventilation valve G 2"	45 150
11	1	Manifold connection short G 1" female-G 1" male	25 612 091
12	2	O-ring FKM 80-29x2,5	89 111 878
13	1	Suction set with foot valve	25 686
14	1	mobiBLUE 250 I	45 317 155
15	1	Lever lock	89 835
16	1	Screw plug	83 978
17	1	Double nipple G1" male	80 792
18	1	Cylinder screw M5x6	89 445
19	1	Bend 90° with fitting G 1" female	25 601 091
20	1	O-ring FKM 70-47x4	83 131 860
21	1	Discharge hose DN19-bend 90° G 1" female	25 191 400

\*depending on the model

Tab. 11.-1: Overview of components for fig. 10.-1

## 12. Repair/Service

The mobiBLUE was developed and produced according to the highest quality standards. Should a problem develop, despite all quality controls, please contact our customer service:

**PRESSOL Schmiergeräte GmbH**

Tel +49 9462 17-246

Fax +49 9462 1063

service@pressol.com

## 13. Disposal

The operating company is responsible for the proper disposal of the mobiBLUE.

Hereby, the industry-specific and local regulations must be observed when disposing the different materials.

Only qualified personnel is authorized to disassemble and dispose of the mobiBLUE.

## 14. Damage and repair report

Date, signature	Errors and actions taken

Tab.14.-1: Damage and repair report



**Pressol Schmiergeräte GmbH**

Parkstraße 7

93167 Falkenstein | Germany

Tel. +49 9462 17-0

Fax +49 9462 17-208

[info@pressol.com](mailto:info@pressol.com)

[www.pressol.com](http://www.pressol.com)

