

## Diesel pump 100 l/min/26,4USgal

220 V-1~AC-60 Hz



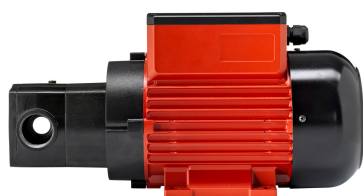
**Item number:** 23 433 005  
**EAN:** 4048358707000

### Technical data

Connecting cable, length (m) / (ft): 1,6 / 5.3  
 Connection suction side: G 1" female  
 Connection discharge side: G 1" female

### Hydraulic data

Pumping media: fuel oil and diesel  
 Pump design: vane pump, selfpriming  
 Delivery rate under free discharge up to (l/min) / US gal: 100 / 26.4  
 Suction height up to (m) / (ft): 5 / 17  
 Discharge pressure up to (bar) / (psi): 2,2 / 31.9  
 Operating temperature (°C): -10 ... +40  
 Bypass mode max. (min): 2  
 dry run maximum: 2  
 Noise Development (dBA) according to ISO: 74



### Motor data

Insulation class: F  
 Highest permissible limit temperature (°C) / (°F): 155 / 311  
 Voltage (V): 220  
 Frequency (Hz): 60  
 Power consumption (A): 6  
 Power (W): 1200  
 Thermal protection: self resetting  
 Duty cycle (min): continuous operation – a real endurance runner  
 Torque (Nm): 4,1  
 Rotation speed (rpm): 1750  
 Type of construction: IMB 3  
 Safety class: IP66



### Materials of parts in contact with liquid

Seals: FKM (Viton®)/NBR  
 Pump housing: AISi 12 (sea water resistant)  
 Rotor: GG 25  
 Vane: POM

Dimensions LxWxH (mm) / (inch): 320 x 135 x 190 / 12.6 x 5.3 x 7.5  
 Weight (kg) / (lb): 10,08 / 22.2

### Specification

- Vane pump, with integral bypass
- On/Off switch
- Siphon protection acc. to WHG (German government regulation for environmental care), continuously active

### Special notes





- 5 year warranty (excluding wearable parts)
- First class construction of electric machines and pumps
- Designed for a long service life
- Encapsulation of the electric motor, which, in case of extreme temperature fluctuations, largely prevents the formation of condensed water and of short-circuits resulting thereof
- Motor and switch case made of shock resistant, die-cast aluminium
- continuous operation – a real endurance runner
- Suction height 5 m / 16,4 ft
- Small tolerances provide a high suction- and pressure performance
- Pump case freely positionable in all 90° positions

**Packaging**

Dimensions LxWxH (mm) / (inch): 338 x 200 x 196 / 13.3 x 7.9 x 7.7

Weight including package (kg) / (lb): 10,68 / 23.5

Packing unit: 1,0



23433 005 Dieselpumpe 100 l/min/26,4USgal - 220 V-1-AC-60 Hz

